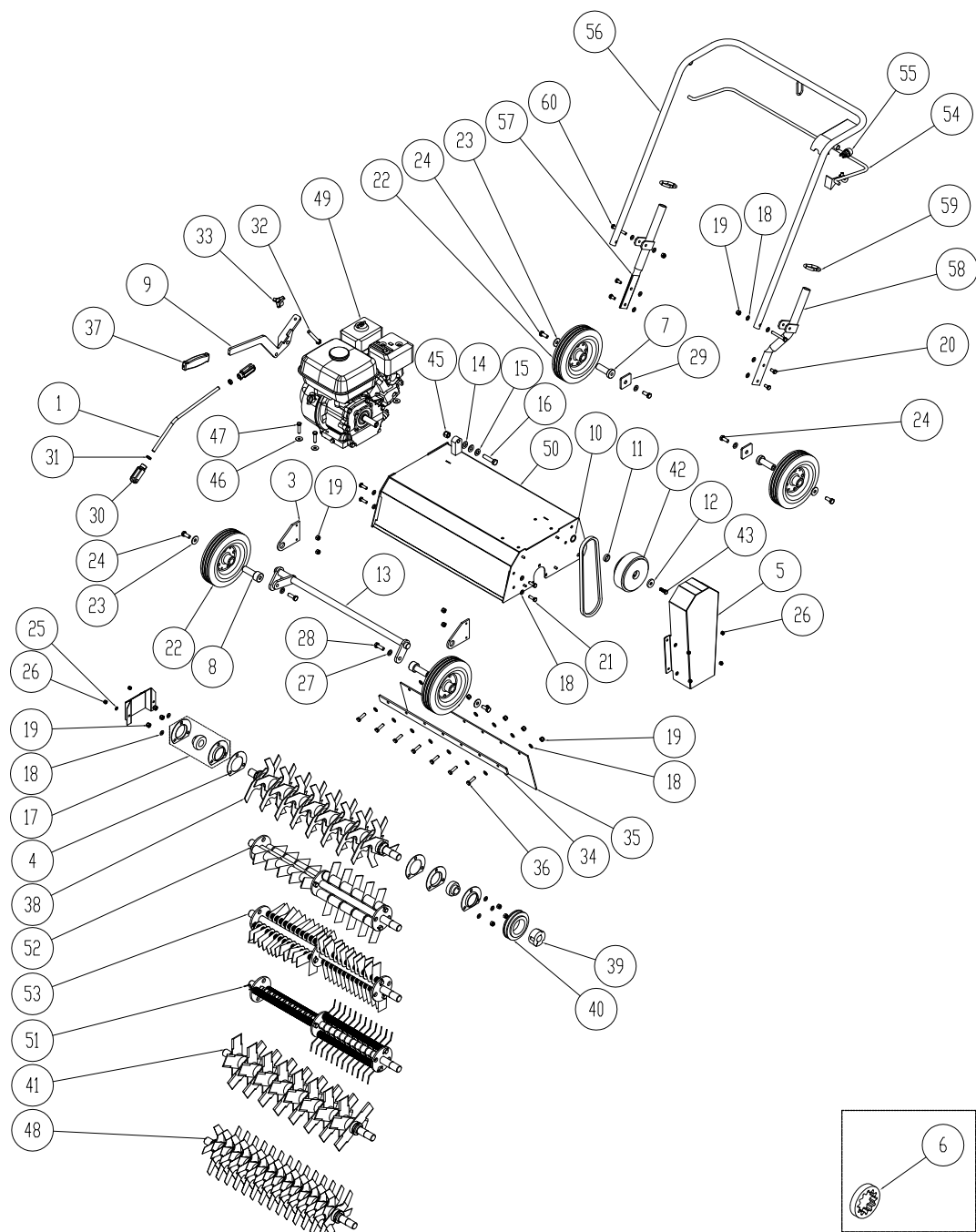




Tab.1 - Base machine

ARIO 60

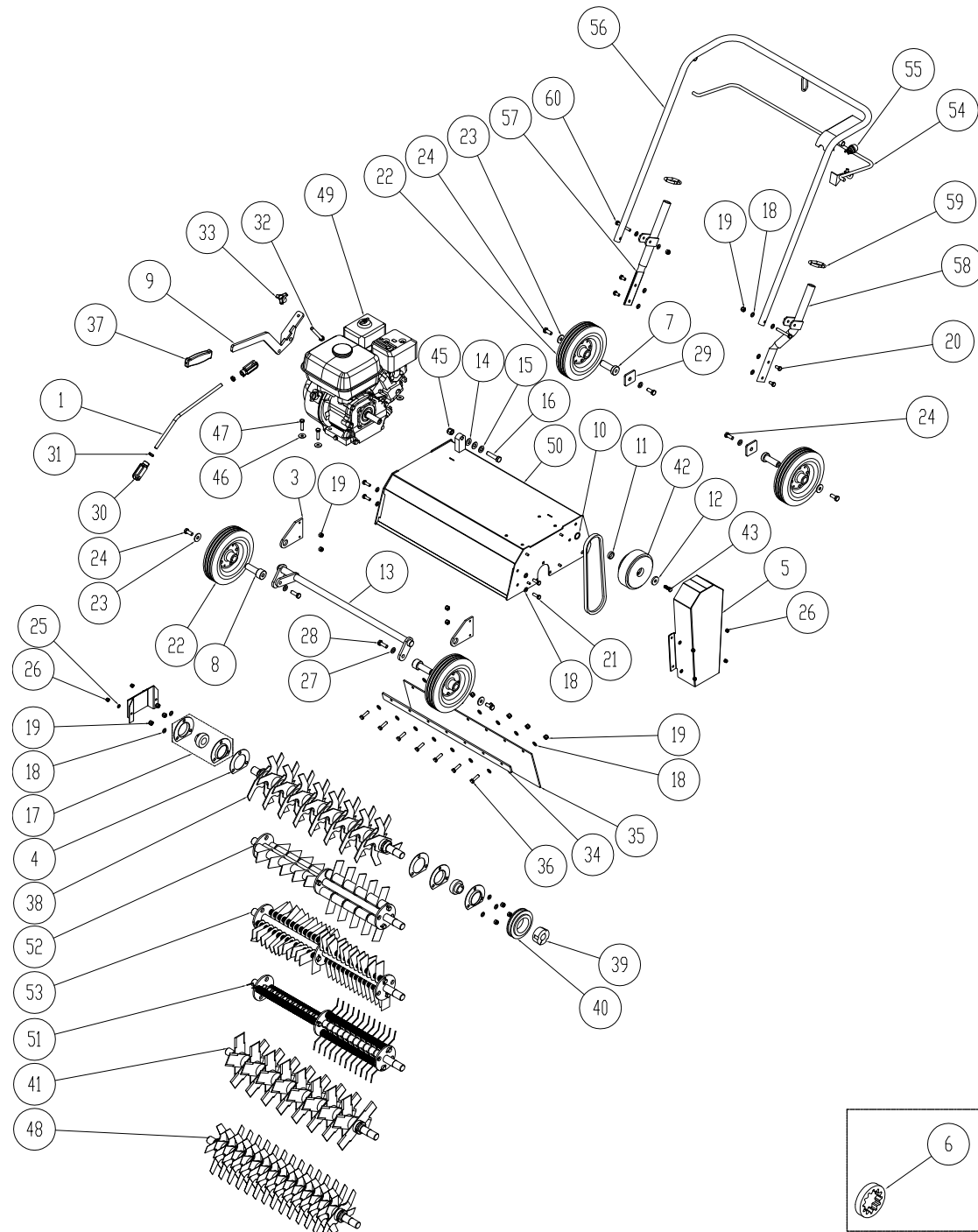


Pos	Description	No.	Code
1	Regulation rod	1	AR6000011
2	Bearing cover	1	AR6000042
3	Axle plate	2	AR6000016
4	Bearing flange	2	AR6000065
5	Belt cover	1	AR6000036
6	Centrifugal rubber ϕ 122	1	19400000
7	Rear wheel rod ϕ 20	2	AR6000018
	Rear wheel rod ϕ 17	2	000509
8	Front wheel rod ϕ 20	2	AR6000014
	Front wheel rod ϕ 17	2	000508
9	Regulation lever	1	AR6000008
10	Spacer PS ϕ 20x1	1	AR6000027
11	Spacer ϕ 19x8	1	AR6000028
12	Washer (clutch) ϕ 10x30x5	1	510006212
13	Axle	1	AR6000013
14	Belleville washer ϕ 12	2	900360
15	Washer ϕ 12x24	1	900344
16	Screw TE M12x50	1	900361
17	Bearing PF 205	2	AR6000022
18	Washer ϕ 8x16	32	900034
19	Self-lock nut M8	19	900027
20	Screw TE M8x16	4	900401
21	Screw TE M8x25	4	900333
22	Wheel 200/50-100 ϕ 20	4	AR6000015
	Wheel 200/50-100 ϕ 17	4	900458
23	Washer ϕ 10x30	4	900026
24	Screw TE M10x25	6	900380
25	Washer ϕ 6x12	6	900365
26	Self-lock nut (low) M6	6	900899
27	Washer ϕ 10x20	4	900028
28	Screw TE M10x30	2	900373
29	Support plate axle	2	070005301

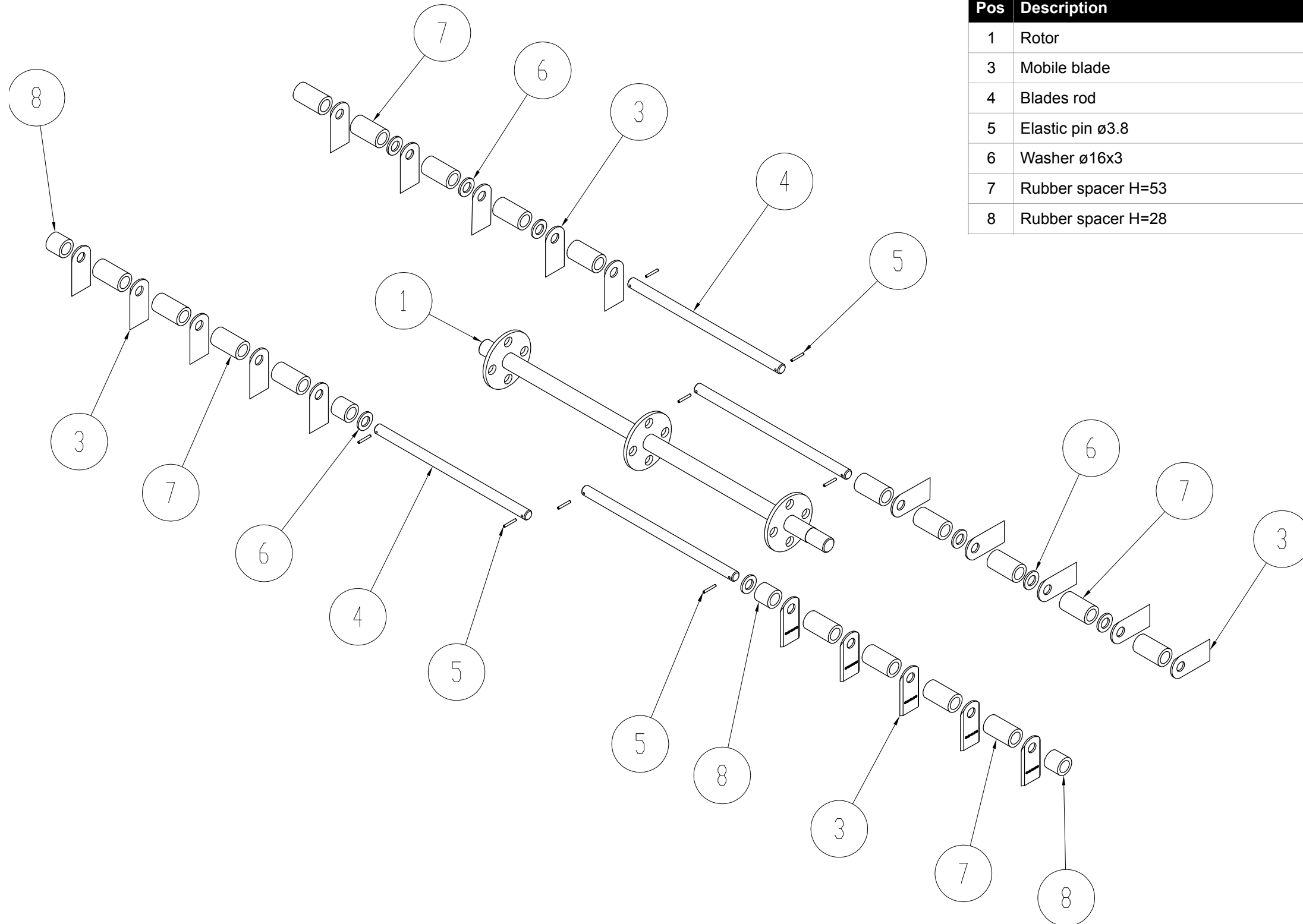


Tab.1 - Basic machine

ARIO 60

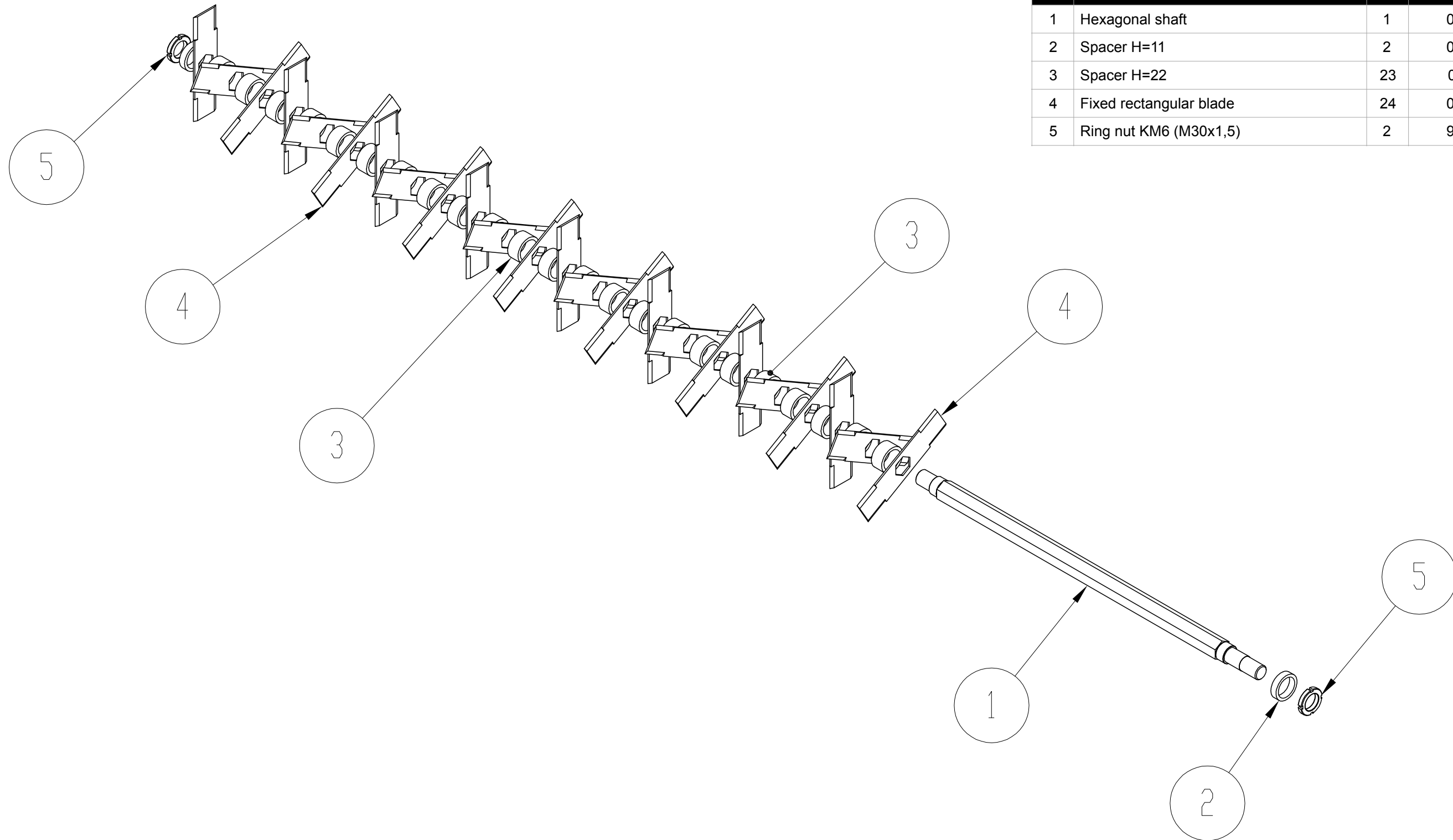


Pos	Description	No.	Code
30	Fork M10	2	900351
31	Low nut M10	2	900377
32	Screw TE M10x80	1	500001080
33	Knob M10 F	1	900749
34	Rubber plate	1	AR6000004
35	Rubber protection	1	AR6000005
36	Screw TE M8x30	7	900368
37	Hand grip 25x8	1	900009
38	Rotor Assy with fixed pointed blades	1	Tav. 4
39	Bush 1610 ø24	1	900909
40	Pulley 1A 100	1	001292
41	Rotor Assy with fixed rectangular blades	1	Tav. 3
42	Centrifugal clutch 1A 122 ø3/4	1	013800034
43	Screw TE 5/16" x 1" UNF	1	900549
44	Belts A-29	1	620001029
45	Self-lock nut M12	1	900362
46	Washer ø8x24	4	900038
47	Screw TE M8x35	4	900335
48	Rotor Assy with fixed pointed milled blades	1	Tav. 7
49	Engine Honda GX 200	1	014100004
50	Box	1	AR6000012
51	Rotor Assy with pointed springs	1	Tav. 5
52	Rotor Assy with mobile blades	1	Tav. 2
53	Rotor Assy with mobile blades and springs	1	Tav. 6
54	Control lever	1	AR6000048
55	Safety switch	1	900910
56	Overturning handle	1	001291
57	Right support (overturning handle)	1	001008
58	Left support (overturning handle)	1	001007
59	Fast closing ring	2	001006
60	Screw TE M8x60	2	900372

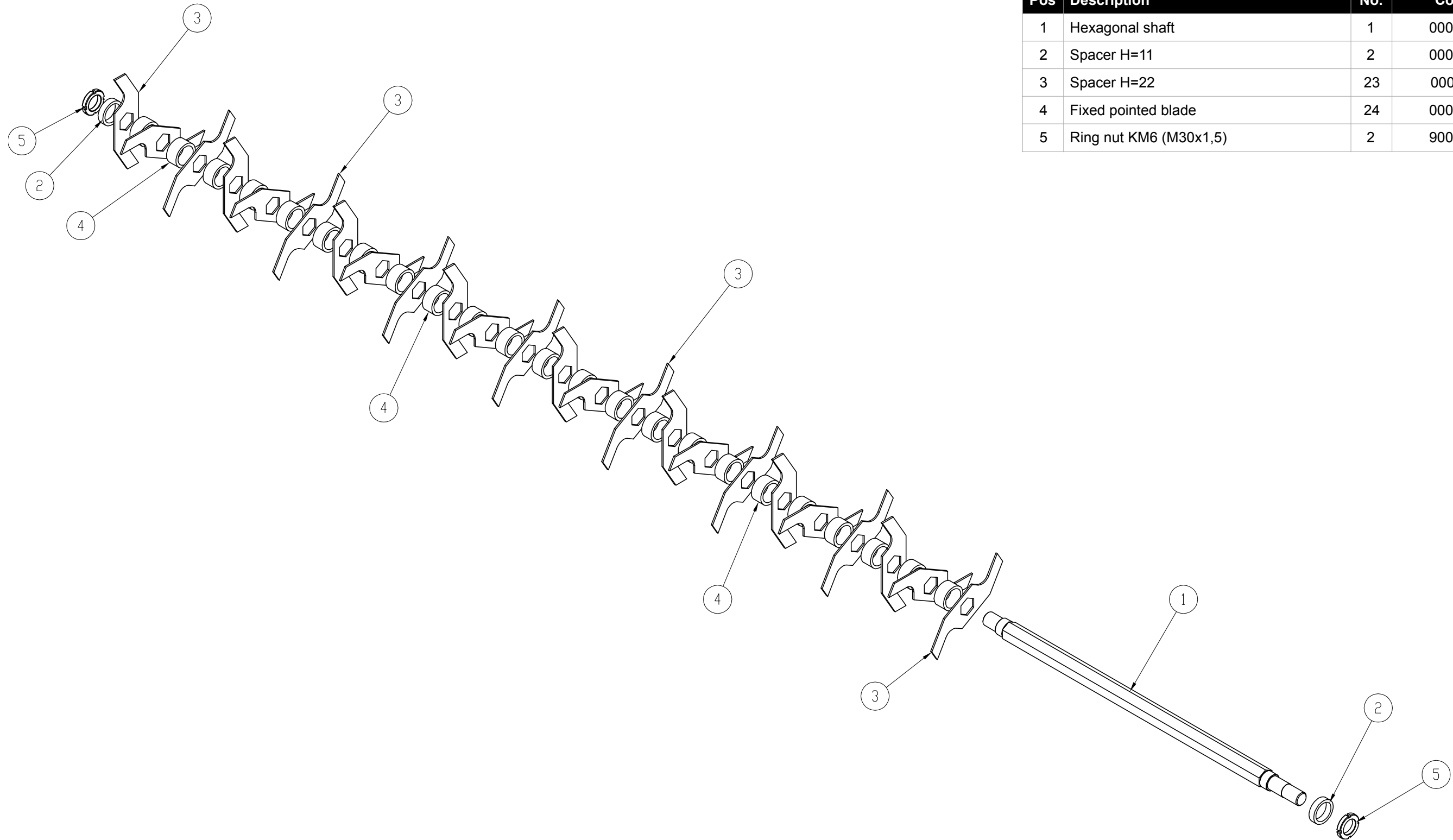


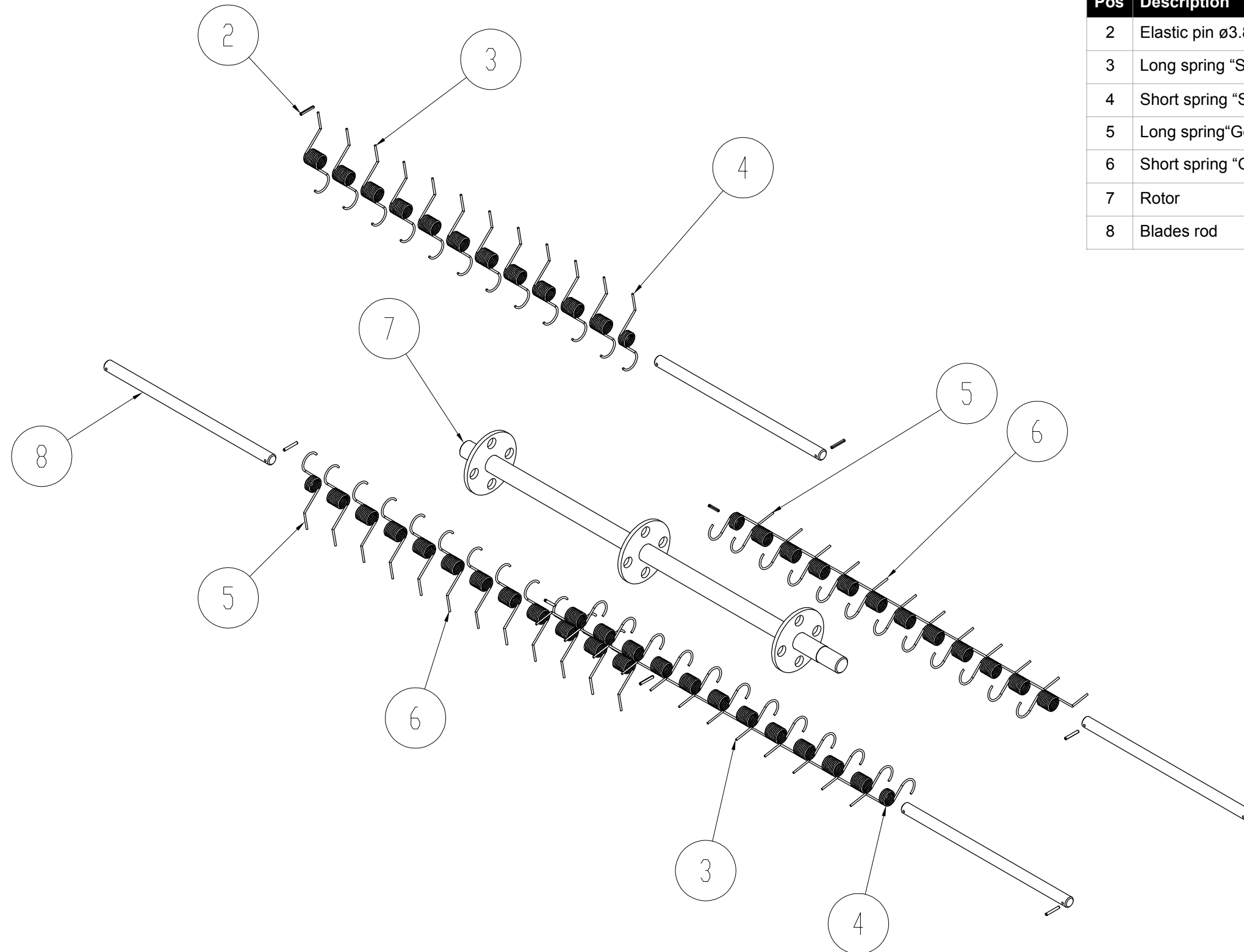
Pos	Description	No.	Code
1	Rotor	1	AR6000017
3	Mobile blade	20	1000013
4	Blades rod	4	AR6000020
5	Elastic pin $\varnothing 3.8$	8	900499
6	Washer $\varnothing 16 \times 3$	8	900003
7	Rubber spacer H=53	18	AR6000052M
8	Rubber spacer H=28	4	AR6000021M

Pos	Description	No.	Code
1	Hexagonal shaft	1	000516
2	Spacer H=11	2	000510
3	Spacer H=22	23	000511
4	Fixed rectangular blade	24	000513
5	Ring nut KM6 (M30x1,5)	2	900459

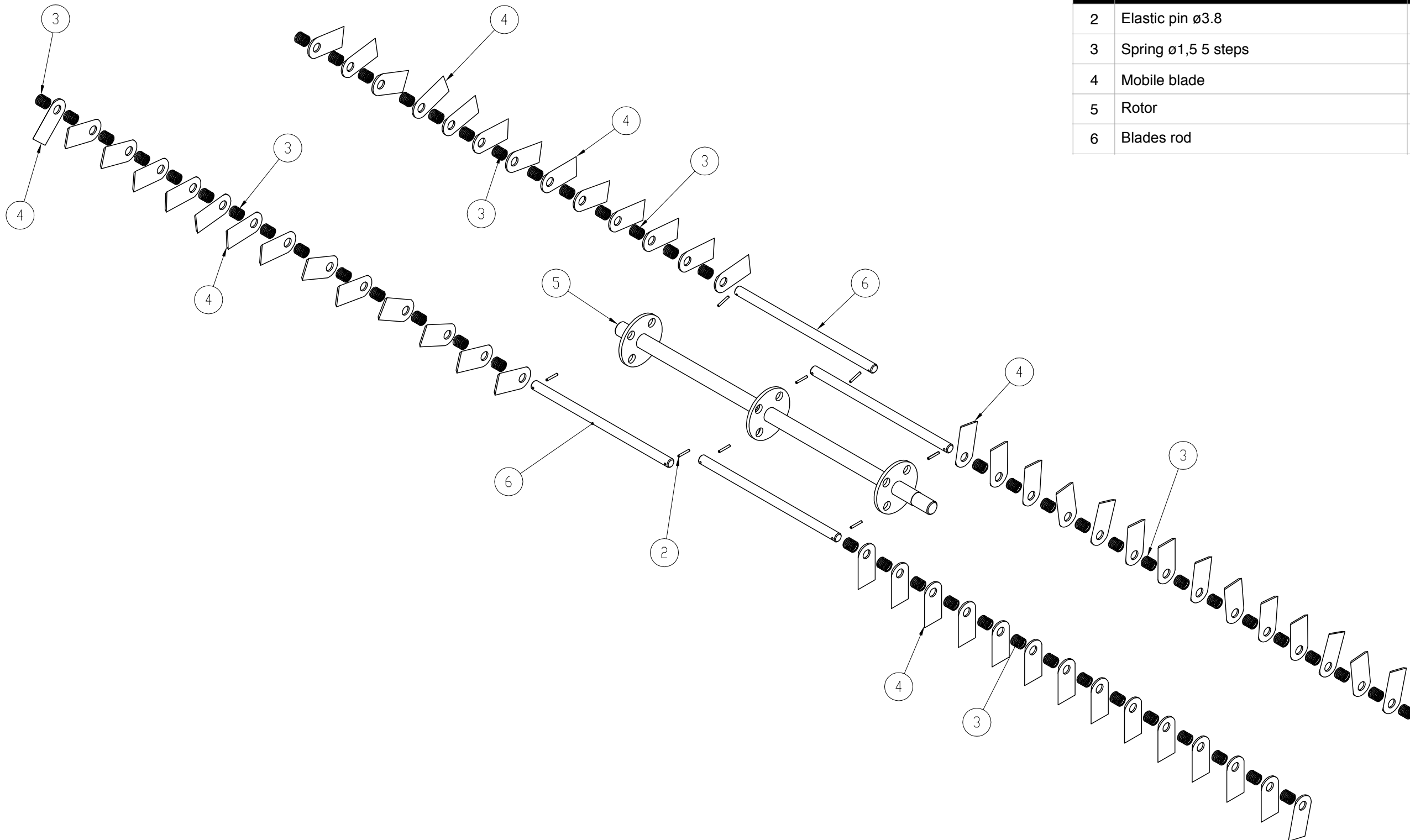


Pos	Description	No.	Code
1	Hexagonal shaft	1	000516
2	Spacer H=11	2	000510
3	Spacer H=22	23	000511
4	Fixed pointed blade	24	000514
5	Ring nut KM6 (M30x1,5)	2	900459





Pos	Description	No.	Code
2	Elastic pin $\varnothing 3.8$	8	900499
3	Long spring "Silver"	22	AR4000059M
4	Short spring "Silver"	2	AR4000058M
5	Long spring "Gold"	2	AR4000056M
6	Short spring "Gold"	22	AR4000057M
7	Rotor	1	AR6000017
8	Blades rod	4	AR6000020



Pos	Description	No.	Code
2	Elastic pin $\varnothing 3.8$	8	900499
3	Spring $\varnothing 1,5$ 5 steps	56	AR6000064M
4	Mobile blade	55	1000013
5	Rotor	1	AR6000017
6	Blades rod	4	AR6000020

Pos	Description	No.	Code
1	Hexagonal shaft	1	000516
2	Spacer H=11	43	000510
3	Fixed pointed milled blade "Verti cut"	42	000517
4	Ring nut KM6 (M30x1,5)	2	900459

